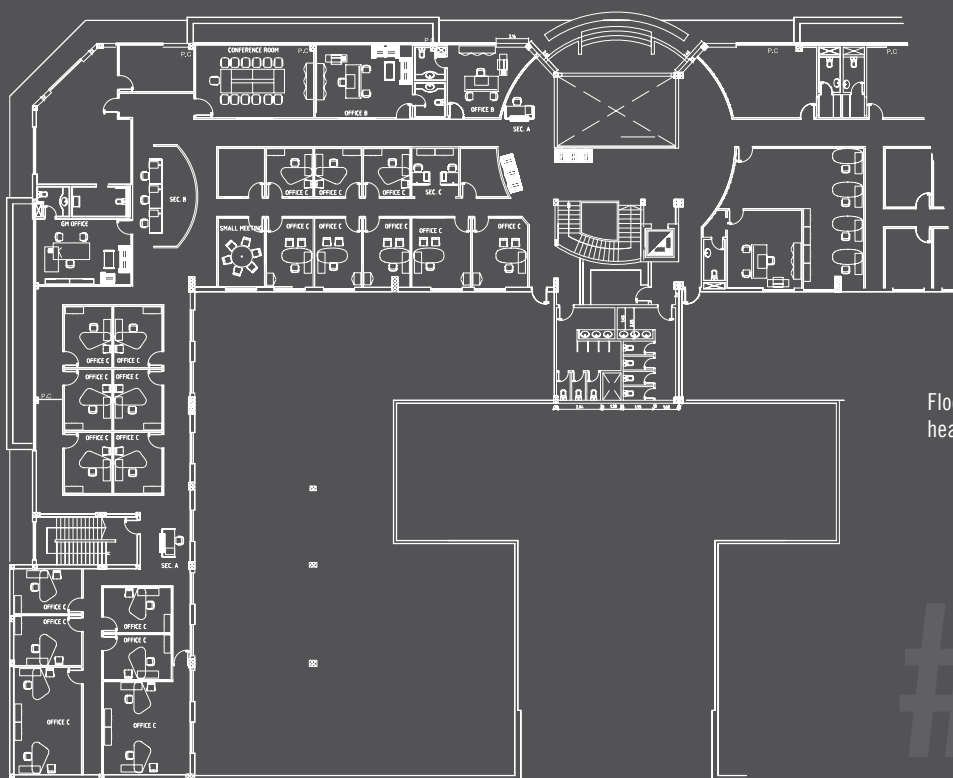


Al Ghunaim / Kuwait

# APPLIED ART

# AL GHUNAIM



Floorplan of the Al Ghunaim headquarter.

# ELEGANT REDUCTION WITH COLORFUL SPOTS.



Generous management office.



Special feature of AL-desk...



... the drawer for personal belongings — unclosed optionally by Smart ID electronic key.

## Al Ghunaim

**Company** Al Ghunaim was established in 1978 and is one of the prominent groups in Kuwait, with business interests in trading, hospitality, restaurants and security. The group has more than 1,500 employees in 12 companies.

**Briefing** The company Al Muhalhel was recommended to the client for furnishing the new headquarter. The choice of AL management programme was made for its iconic design. Desks in rectangular, triangular and oval shapes were selected for reflecting the organizational structure. Bene furniture has added an aesthetic value to the working environment — simplicity and modernity are being communicated. The project involved furnishing management- and cellular-offices, a conference room, a small meeting room, the reception and the archive.

### FACTS

**Address** Al Ghunaim Trading Co. Ltd.,  
Shuwaikh Industrial Area, Kuwait

**Sector** Hospitality Business

**Size** 2 floors

**Builder** Al Muhalhel General  
Trading & Contracting Co.

**Projectmanagement**

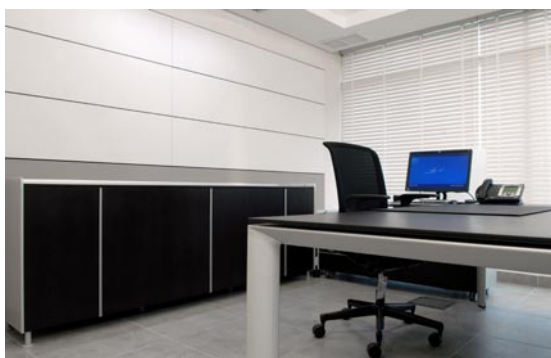
Moath Al Muhalhel

**Products** AL Programme

**Bene Color World** Expressive



Casual sofa for conversation and relaxation.



»Throughout the execution of the project Bene proved to be perfectly able to combine ambitious office design with efficient, functional products.« Khaled Alghunaim, Al Ghunaim



Filo chair — comfortable and stylish at the same time.